

produced by:

OKULEN[®]

Technische Kunststoffe
Engineering Plastics

VARIO mat 1+ AS

Material:

High molecular weight polyethylene

Dimensions: 1200 x 2400 mm

Usable Surface: 2,88 m²

Total thickness: 17 mm

weight circa. : 32 kg

Surface:

Top 5 mm profile

Underside Anti-slip fluting

Qty. handles: 4

Assembly options:

12 pcs. Ø 22 mm

Colour: black multi-coloured

Load bearing capacity (circa):

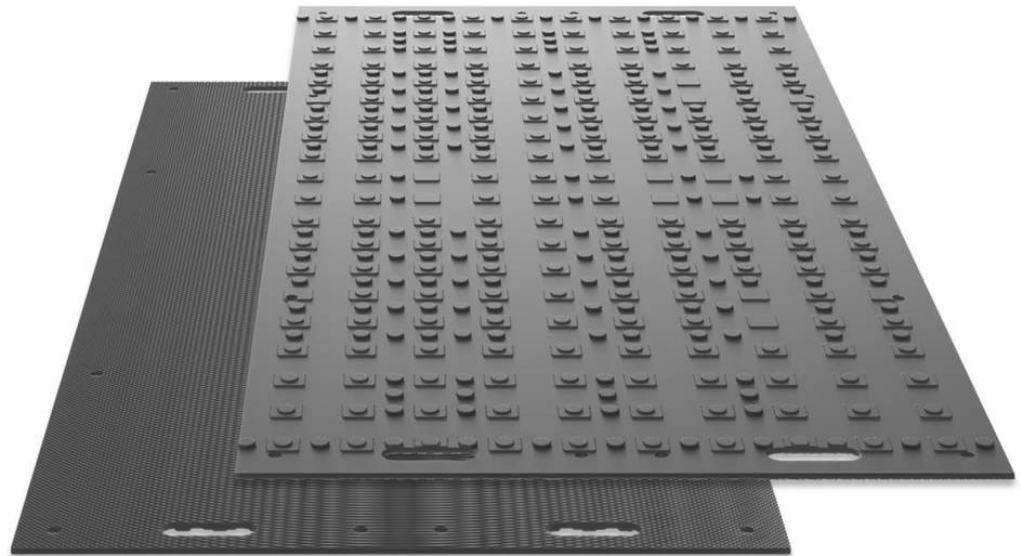
60t (depending on the substrate)

Transport capacity:

690units (1987m²) **Lorry**

180units (518m²) **20'-Container**

360 units (1036m²) **40'-Container**



Fields of application:



Road construction
and access roads



Concerts and
events



Temporary
walkways



Mobile logistics



Line
construction



Mobile parking
lots

